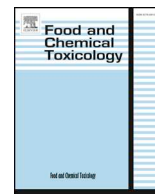




ELSEVIER

Contents lists available at ScienceDirect

Food and Chemical Toxicology

journal homepage: www.elsevier.com/locate/foodchemtox

Short Review

RIFM fragrance ingredient safety assessment, 4-methyl-5-thiazoleethanol, CAS Registry Number 137-00-8



A.M. Api^a, D. Belsito^b, D. Botelho^a, M. Bruze^c, G.A. Burton Jr.^d, J. Buschmann^e, M.L. Dagli^f, M. Date^a, W. Dekant^g, C. Deodhar^a, M. Francis^a, A.D. Fryer^h, L. Jones^a, K. Joshi^a, S. La Cava^a, A. Lapczynski^a, D.C. Lieblerⁱ, D. O'Brien^a, A. Patel^a, T.M. Penning^j, G. Ritacco^a, J. Romine^a, N. Sadekar^a, D. Salvito^a, T.W. Schultz^k, I.G. Sipes^l, G. Sullivan^{a,*}, Y. Thakkar^a, Y. Tokura^m, S. Tsang^a

^a Research Institute for Fragrance Materials Inc., 50 Tice Boulevard, Woodcliff Lake, NJ, 07677, USA

^b Member RIFM Expert Panel, Columbia University Medical Center, Department of Dermatology, 161 Fort Washington Ave., New York, NY, 10032, USA

^c Member RIFM Expert Panel, Malmo University Hospital, Department of Occupational & Environmental Dermatology, Sodra Forstadsgatan 101, Entrance 47, Malmo, SE-20502, Sweden

^d Member RIFM Expert Panel, School of Natural Resources & Environment, University of Michigan, Dana Building G110, 440 Church St., Ann Arbor, MI, 48109, USA

^e Member RIFM Expert Panel, Fraunhofer Institute for Toxicology and Experimental Medicine, Nikolai-Fuchs-Strasse 1, 30625, Hannover, Germany

^f Member RIFM Expert Panel, University of Sao Paulo, School of Veterinary Medicine and Animal Science, Department of Pathology, Av. Prof. dr. Orlando Marques de Paiva, 87, Sao Paulo, CEP 05508-900, Brazil

^g Member RIFM Expert Panel, University of Wuerzburg, Department of Toxicology, Versbacher Str. 9, 97078, Wuerzburg, Germany

^h Member RIFM Expert Panel, Oregon Health Science University, 3181 SW Sam Jackson Park Rd., Portland, OR 97239, USA

ⁱ Member RIFM Expert Panel, Vanderbilt University School of Medicine, Department of Biochemistry, Center in Molecular Toxicology, 638 Robinson Research Building, 2200 Pierce Avenue, Nashville, TN, 37232-0146, USA

^j Member of RIFM Expert Panel, University of Pennsylvania, Perelman School of Medicine, Center of Excellence in Environmental Toxicology, 1316 Biomedical Research Building (BRB) II/III, 421 Curie Boulevard, Philadelphia, PA, 19104-3083, USA

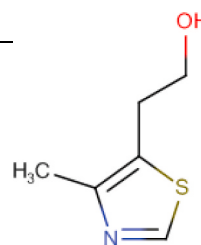
^k Member RIFM Expert Panel, The University of Tennessee, College of Veterinary Medicine, Department of Comparative Medicine, 2407 River Dr., Knoxville, TN, 37996-4500, USA

^l Member RIFM Expert Panel, Department of Pharmacology, University of Arizona, College of Medicine, 1501 North Campbell Avenue, P.O. Box 245050, Tucson, AZ, 85724-5050, USA

^m Member RIFM Expert Panel, The Journal of Dermatological Science (JDS), Editor-in-Chief, Professor and Chairman, Department of Dermatology, Hamamatsu University School of Medicine, 1-20-1 Handayama, Higashi-ku, Hamamatsu, 431-3192, Japan

Version: 111119. This version replaces any previous versions.

Name: 4-Methyl-5-thiazoleethanol
CAS Registry Number: 137-00-8



Abbreviation/Definition List:

* Corresponding author.

E-mail address: gsullivan@rifm.org (G. Sullivan).

<https://doi.org/10.1016/j.fct.2020.111530>

Received 27 January 2020; Received in revised form 30 April 2020; Accepted 11 June 2020

Available online 05 July 2020

0278-6915/ © 2020 Elsevier Ltd. All rights reserved.

2-Box Model - A RIFM, Inc. proprietary *in silico* tool used to calculate fragrance air exposure concentration

AF - Assessment Factor

BCF - Bioconcentration Factor

Creme RIFM Model - The Creme RIFM Model uses probabilistic (Monte Carlo) simulations to allow full distributions of data sets, providing a more realistic estimate of aggregate exposure to individuals across a population (Comiskey et al., 2015, 2017; Safford et al., 2015a, 2017) compared to a deterministic aggregate approach

DEREK - Derek Nexus is an *in silico* tool used to identify structural alerts

DRF - Dose Range Finding

DST - Dermal Sensitization Threshold

ECHA - European Chemicals Agency

ECOSAR - Ecological Structure-Activity Relationships Predictive Model

EU - Europe/European Union

GLP - Good Laboratory Practice

IFRA - The International Fragrance Association

LOEL - Lowest Observable Effect Level

MOE - Margin of Exposure

MPPD - Multiple-Path Particle Dosimetry. An *in silico* model for inhaled vapors used to simulate fragrance lung deposition

NA - North America

NESIL - No Expected Sensitization Induction Level

NOAEC - No Observed Adverse Effect Concentration

NOAEL - No Observed Adverse Effect Level

NOEC - No Observed Effect Concentration

NOEL - No Observed Effect Level

OECD - Organisation for Economic Co-operation and Development

OECD TG - Organisation for Economic Co-operation and Development Testing Guidelines

PBT - Persistent, Bioaccumulative, and Toxic

PEC/PNEC - Predicted Environmental Concentration/Predicted No Effect Concentration

Perfumery - In this safety assessment, perfumery refers to fragrances made by a perfumer used in consumer products only. The exposures reported in the safety assessment include consumer product use but do not include occupational exposures.

QRA - Quantitative Risk Assessment

QSAR - Quantitative Structure-Activity Relationship

REACH - Registration, Evaluation, Authorisation, and Restriction of Chemicals

RfD - Reference Dose

RIFM - Research Institute for Fragrance Materials

RQ - Risk Quotient

Statistically Significant - Statistically significant difference in reported results as compared to controls with a $p < 0.05$ using appropriate statistical test

TTC - Threshold of Toxicological Concern

UV/Vis spectra - Ultraviolet/Visible spectra

VCF - Volatile Compounds in Food

VoU - Volume of Use vPvB - (very) Persistent, (very) Bioaccumulative

WoE - Weight of Evidence

The Expert Panel for Fragrance Safety* concludes that this material is safe as described in this safety assessment.

This safety assessment is based on the RIFM Criteria Document (Api, 2015), which should be referred to for clarifications. Each endpoint discussed in this safety assessment includes the relevant data that were available at the time of writing (version number in the top box is indicative of the date of approval based on a 2-digit month/day/year), both in the RIFM Database (consisting of publicly available and proprietary data) and through publicly available information sources (e.g., SciFinder and PubMed). Studies selected for this safety assessment were based on appropriate test criteria, such as acceptable guidelines, sample size, study duration, route of exposure, relevant animal species, most relevant testing endpoints, etc. A key study for each endpoint was selected based on the most conservative endpoint value (e.g., PNEC, NOAEL, LOEL, and NESIL).

*The Expert Panel for Fragrance Safety is an independent body that selects its own members and establishes its own operating procedures. The Expert Panel is comprised of internationally known scientists that provide RIFM with guidance relevant to human health and environmental protection.

Summary: The existing information supports the use of this material as described in this safety assessment.

4-Methyl-5-thiazoleethanol was evaluated for genotoxicity, repeated dose toxicity, reproductive toxicity, local respiratory toxicity, phototoxicity/photoallergenicity, skin sensitization, and environmental safety. Data show that 4-methyl-5-thiazoleethanol is not genotoxic. The repeated dose, reproductive, and local respiratory toxicity endpoints were evaluated using the threshold for toxicological concern (TTC) for a Cramer Class III material, and the exposure to 4-methyl-5-thiazoleethanol is below the TTC (0.0015 mg/kg/day, 0.0015 mg/kg/day, and 0.47 mg/day, respectively). The skin sensitization endpoint was completed using the dermal sensitization threshold (DST) for non-reactive materials (900 $\mu\text{g}/\text{cm}^2$); exposure is below the DST. The phototoxicity/photoallergenicity endpoints were evaluated based on UV spectra; 4-methyl-5-thiazoleethanol is not expected to be phototoxic/photoallergenic. The environmental endpoints were evaluated based on a screening-level assessment; 4-methyl-5-thiazoleethanol was found not to be persistent, bioaccumulative, and toxic (PBT) as per the International Fragrance Association (IFRA) Environmental Standards, and its risk quotients, based on its current Volume of Use in Europe and North America (i.e., Predicted Environmental Concentration/Predicted No Effect Concentration [PEC/PNEC]) are < 1 .

Human Health Safety Assessment

Genotoxicity: Not genotoxic.

(RIFM, 2014a; RIFM, 2014b)

Repeated Dose Toxicity: No NOAEL available. Exposure is below the TTC.

Reproductive Toxicity: No NOAEL available. Exposure is below the TTC.

Skin Sensitization: No safety concerns at current, declared use levels; Exposure is below the DST.

Phototoxicity/Photoallergenicity: Not expected to be phototoxic/photoallergenic.

(UV Spectra, RIFM Database)

Local Respiratory Toxicity: No NOAEC available. Exposure is below the TTC.

Environmental Safety Assessment

Hazard Assessment:

Persistence: Screening-level: 2.89 (BIOWIN 3)

(EPI Suite v4.11, US EPA, 2012a)

Bioaccumulation: Screening-level: 1.4 L/kg

(EPI Suite v4.11, US EPA, 2012a)

Ecotoxicity: Screening-level: Fish LC50: 1172 mg/L

(RIFM Framework; Salvito et al., 2002)

Conclusion: Not PBT or vPvB as per IFRA Environmental Standards

Risk Assessment:

Screening-level: PEC/PNEC (North America and Europe) < 1

(RIFM Framework; Salvito et al., 2002)

Critical Ecotoxicity Endpoint: Fish LC50: 1172 mg/L

(RIFM Framework; Salvito et al., 2002)

RIFM PNEC is: 1.172 $\mu\text{g}/\text{L}$

•Revised PEC/PNECs (2015 IFRA VoU): North America and Europe: Not applicable; cleared at screening-level

1. Identification

- Chemical Name:** 4-Methyl-5-thiazoleethanol
- CAS Registry Number:** 137-00-8
- Synonyms:** 5-Hydroxyethyl-4-methylthiazole; 5-(2-Hydroxyethyl)-4-methylthiazole; 4-Methyl-5-(β -hydroxyethyl)thiazole; 2-(4-Methylthiazol-5-yl)ethanol; Sulfuroil; 5-Thiazoleethanol, 4-methyl-; 2-(4-Methyl-1,3-thiazol-5-yl)ethanol; 4-Methyl-5-thiazoleethanol
- Molecular Formula:** C₆H₉NOS
- Molecular Weight:** 143.21
- RIFM Number:** 6251
- Stereochemistry:** Isomer not specified. No stereocenters and no stereoisomers possible.

2. Physical data

- Boiling Point:** 259.88 °C (EPI Suite)
- Flash Point:** > 93 °C (Globally Harmonized System), > 200 °F; CC (Fragrance Materials Association [FMA])
- Log K_{ow}:** 1.11 (EPI Suite)
- Melting Point:** 62.5 °C (EPI Suite)
- Water Solubility:** 9081 mg/L (EPI Suite)
- Specific Gravity*:** 1.19200 to 1.21000 @ 25.00 °C
- Vapor Pressure:** 0.000968 mm Hg @ 20 °C (EPI Suite v4.0), 0.06 mm Hg 20 °C (FMA), 0.00171 mm Hg @ 25 °C (EPI Suite)
- UV Spectra:** Minor absorbance between 290 and 700 nm; molar absorption coefficient is below the benchmark (1000 L mol⁻¹ · cm⁻¹)
- Appearance/Organoleptic*:** A colorless to pale yellow clear oily liquid with a medium meaty, fatty, cooked, beef juice, brothy, nutty, yeasty, bready, oily, sulfurous odor. The taste is described as meaty, brothy, roasted, metallic and nutty.

*<http://www.thegoodscentscompany.com/data/rw1023221.html#toorgano>, retrieved 02/08/18

3. Volume of use (worldwide band)

- 1–10 metric tons per year [IFRA, 2015](#).

4. Exposure to fragrance ingredient

- | | | |
|----|---|-----------------------------|
| 1. | 95th Percentile Concentration in Hydroalcoholics: 0.0069% | RIFM (2017) |
| 2. | Inhalation Exposure*: 0.00015 mg/kg/day or 0.011 mg/day | RIFM (2017) |
| 3. | Total Systemic Exposure**: 0.00054 mg/kg/day | RIFM (2017) |

*95th percentile calculated exposure derived from concentration survey data in the Creme RIFM Aggregate Exposure Model ([Comiskey et al., 2015](#); [Safford et al., 2015a](#); [Safford et al., 2017](#); and [Comiskey et al., 2017](#)).

**95th percentile calculated exposure; assumes 100% absorption unless modified by dermal absorption data as reported in Section 5. It is derived from concentration survey data in the Creme RIFM Aggregate Exposure Model and includes exposure via dermal, oral, and inhalation routes whenever the fragrance ingredient is used in products that include these routes of exposure ([Comiskey et al., 2015](#); [Safford et al., 2015a](#); [Safford et al., 2017](#); and [Comiskey et al., 2017](#)).

5. Derivation of systemic absorption

- Dermal:** Assumed 100%
- Oral:** Assumed 100%
- Inhalation:** Assumed 100%

6. Computational toxicology evaluation

- Cramer Classification:** Class III, High

Expert Judgment	Toxtree v 2.6	OECD QSAR Toolbox v 3.2
III	III	III

2. Analogs Selected:

- Genotoxicity:** None
- Repeated Dose Toxicity:** None
- Reproductive Toxicity:** None
- Skin Sensitization:** None
- Phototoxicity/Photoallergenicity:** None
- Local Respiratory Toxicity:** None
- Environmental Toxicity:** None

3. Read-across Justification:

7. Metabolism

No relevant data available for inclusion in this safety assessment.

Additional References: None

8. Natural occurrence (discrete chemical) or composition (NCS)

4-Methyl-5-thiazoleethanol is reported to occur in the following foods by the VCF*:

Beans	Grape brandy
Beef	Malt
Beer	Peanut (<i>Arachis hypogaea</i> L.)
Citrus fruits	Whiskey
Cocoa	Wine

*Volatile Compounds in Food: Database/Nijssen, L.M.; Ingen-Visscher, C.A. van; Donders, J.J.H. (eds). – Version 15.1 – Zeist (The Netherlands): TNO Triskelion, 1963–2014. A continually updated database containing information on published volatile compounds that have been found in natural (processed) food products. Includes FEMA GRAS and EU-Flavis data.

9. Reach Dossier

Available; accessed 02/08/18

10. Conclusion

The existing information supports the use of this material as described in this safety assessment.

11. Summary

11.1. Human health endpoint summaries

11.1.1. Genotoxicity

Based on the current existing data, 4-methyl-5-thiazoleethanol does not present a concern for genotoxicity.

11.1.1.1. Risk assessment. 4-Methyl-5-thiazoleethanol was assessed in the BlueScreen assay and found positive for genotoxicity, without metabolic activation ([RIFM, 2013](#)). BlueScreen is a human cell-based assay for measuring the genotoxicity and cytotoxicity of chemical compounds and mixtures. Additional assays were considered to fully assess the potential mutagenic or clastogenic effects of the target material.

The mutagenic activity of 4-methyl-5-thiazoleethanol has been evaluated in a bacterial reverse mutation assay conducted in compliance with GLP regulations and in accordance with OECD TG 471

using the standard plate incorporation and preincubation methods. *Salmonella typhimurium* strains TA98, TA100, TA1535, TA1537, and *Escherichia coli* WP2uvrA were treated with 4-methyl-5-thiazoleethanol in sterile distilled water at concentrations up to 5000 µg/plate. No increases in the mean number of revertant colonies were observed at any tested concentration in the presence or absence of S9 (RIFM, 2014a). Under the conditions of the study, 4-methyl-5-thiazoleethanol was not mutagenic in the Ames test.

The clastogenic activity of 4-methyl-5-thiazoleethanol was evaluated in an *in vitro* micronucleus test conducted in compliance with GLP regulations and in accordance with OECD TG 487. Human peripheral blood lymphocytes were treated with 4-methyl-5-thiazoleethanol in water at concentrations up to 1430 µg/mL in the presence and absence of metabolic activation (S9) for 4 h and in the absence of metabolic activation for 24 h 4-methyl-5-thiazoleethanol did not induce binucleated cells with micronuclei when tested up to cytotoxic concentrations in either the presence or absence of an S9 activation system (RIFM, 2014b). Under the conditions of the study, 4-methyl-5-thiazoleethanol was considered to be non-clastogenic in the *in vitro* micronucleus test.

Based on the data available, 4-methyl-5-thiazoleethanol does not present a concern for genotoxic potential.

Additional References: None

Literature Search and Risk Assessment Completed On: 02/04/18

11.1.2. Repeated dose toxicity

There are insufficient repeated dose toxicity data on 4-methyl-5-thiazoleethanol or on any read-across materials. The total systemic exposure to 4-methyl-5-thiazoleethanol is below the TTC for the repeated dose toxicity endpoint of a Cramer Class III material at the current level of use.

11.1.2.1. Risk assessment. There are no repeated dose toxicity data on 4-methyl-5-thiazoleethanol or on any read-across materials that can be used to support the repeated dose toxicity endpoint. The total systemic exposure to 4-methyl-5-thiazoleethanol (0.54 µg/kg bw/day) is below the TTC (1.5 µg/kg bw/day; Kroes, 2007) for the repeated dose toxicity endpoint of a Cramer Class III material at the current level of use.

Additional References: None

Literature Search and Risk Assessment Completed On: 01/25/18

11.1.3. Reproductive toxicity

There are insufficient reproductive toxicity data on 4-methyl-5-thiazoleethanol or on any read-across materials. The total systemic exposure to 4-methyl-5-thiazoleethanol is below the TTC for the reproductive toxicity endpoint of a Cramer Class III material at the current level of use.

11.1.3.1. Risk assessment. There are no reproductive toxicity data on 4-methyl-5-thiazoleethanol or on any read-across materials that can be used to support the reproductive toxicity endpoint. The total systemic exposure to 4-methyl-5-thiazoleethanol (0.54 µg/kg bw/day) is below the TTC (1.5 µg/kg bw/day; Kroes, 2007; Laufersweiler, 2012) for the reproductive toxicity endpoint of a Cramer Class III material at the current level of use.

Additional References: None

Literature Search and Risk Assessment Completed On: 01/25/18

11.1.4. Skin sensitization

Based on the existing data and the application of DST, 4-methyl-5-thiazoleethanol does not present a safety concern for skin sensitization under the current, declared levels of use.

11.1.4.1. Risk assessment. The chemical structure of this material indicates that it would not be expected to react with skin proteins (Roberts, 2007; Toxtree 2.6.13; OECD Toolbox v4.1). A guinea pig maximization test did not present reactions indicative of sensitization (RIFM, 2000). Additionally, in a confirmatory human repeat insult patch test (HRIPT) with 250 µg/cm² of 4-methyl-5-thiazoleethanol in diethyl phthalate, no reactions indicative of sensitization were observed in any of the 101 volunteers (RIFM, 2003).

Acting conservatively due to the limited data, the reported exposure was benchmarked utilizing the non-reactive DST of 900 µg/cm² (Safford, 2015b). The current exposure from the 95th percentile concentration is below the DST for non-reactive materials when evaluated in all QRA categories. Table 1 provides the maximum acceptable concentrations for 4-methyl-5-thiazoleethanol that present no appreciable risk for skin sensitization based on the non-reactive DST. These levels represent maximum acceptable concentrations based on the DST approach. However, additional studies may show it could be used at higher levels.

Additional References: None

Literature Search and Risk Assessment Completed On: 01/22/18

11.1.5. Phototoxicity/photoallergenicity

Based on the available UV/Vis spectra, 4-methyl-5-thiazoleethanol would not be expected to present a concern for phototoxicity or photoallergenicity.

11.1.5.1. Risk assessment. There are no phototoxicity studies available for 4-methyl-5-thiazoleethanol in experimental models. UV/Vis absorption spectra indicate minor absorbance between 290 and 700 nm. The corresponding molar absorption coefficient is below the benchmark of concern for phototoxicity and photoallergenicity (Henry, 2009). Based on the lack of significant absorbance in the critical range, 4-methyl-5-thiazoleethanol does not present a concern for phototoxicity or photoallergenicity.

11.1.5.2. UV spectra analysis. UV/Vis absorption spectra (OECD TG 101) for 4-methyl-5-thiazoleethanol were obtained. The spectra indicate minor absorbance in the range of 290–700 nm. The molar absorption coefficient is below the benchmark of concern for phototoxic effects, 1000 L mol⁻¹ · cm⁻¹ (Henry, 2009).

Additional References: None

Literature Search and Risk Assessment Completed On: 12/08/17

11.1.6. Local Respiratory Toxicity

The MOE could not be calculated due to a lack of appropriate data. The exposure level for 4-methyl-5-thiazoleethanol is below the Cramer Class III TTC value for inhalation exposure local effects.

11.1.6.1. Risk assessment. There are no inhalation data available on 4-methyl-5-thiazoleethanol. Based on the Creme RIFM Model, the inhalation exposure is 0.011 mg/day. This exposure is 42.7 times lower than the Cramer Class III TTC value of 0.47 mg/day (based on human lung weight of 650 g; Carthew, 2009); therefore, the exposure at the current level of use is deemed safe.

Additional References: None

Literature Search and Risk Assessment Completed On: 01/27/18

11.2. Environmental endpoint summary

11.2.1. Screening-level assessment

A screening-level risk assessment of 4-methyl-5-thiazoleethanol was performed following the RIFM Environmental Framework (Salvito et al., 2002), which provides 3 tiers of screening-level for aquatic risk.

Table 1

Maximum acceptable concentrations for 4-methyl-5-thiazoleethanol that present no appreciable risk for skin sensitization based on non-reactive DST.

IFRA Category ^a	Description of Product Type	Maximum Acceptable Concentrations in Finished Products Based on Non-reactive DST	Reported 95th Percentile Use Concentrations in Finished Products
1	Products applied to the lips	0.069%	0.0014%
2	Products applied to the axillae	0.021%	0.0044%
3	Products applied to the face using fingertips	0.41%	$9.1 \times 10^{-4}\%$
4	Fine fragrance products	0.39%	0.014%
5	Products applied to the face and body using the hands (palms), primarily leave-on	0.10%	0.011%
6	Products with oral and lip exposure	0.23%	0.0096%
7	Products applied to the hair with some hand contact	0.79%	0.0016%
8	Products with significant ano-genital exposure	0.041%	No Data ^c
9	Products with body and hand exposure, primarily rinse-off	0.75%	0.0050%
10	Household care products with mostly hand contact	2.7%	0.022%
11	Products with intended skin contact but minimal transfer of fragrance to skin from inert substrate	1.5%	No Data ^c
12	Products not intended for direct skin contact, minimal or insignificant transfer to skin	Not Restricted	0.56%

Note.

^aFor a description of the categories, refer to the IFRA/RIFM Information Booklet.^bNo reported use.^cFragrance exposure from these products is very low. These products are not currently included in the Creme RIFM Aggregate Exposure Model.

In Tier 1, only the material's regional VoU, its log K_{ow} and its molecular weight are needed to estimate a conservative risk quotient (RQ), expressed as the ratio Predicted Environmental Concentration/Predicted No Effect Concentration (PEC/PNEC). A general QSAR with a high uncertainty factor applied is used to predict fish toxicity, as discussed in [Salvito et al. \(2002\)](#). In Tier 2, the RQ is refined by applying a lower uncertainty factor to the PNEC using the ECOSAR model ([US EPA, 2012b](#)), which provides chemical class-specific ecotoxicity estimates. Finally, if necessary, Tier 3 is conducted using measured biodegradation and ecotoxicity data to refine the RQ, thus allowing for lower PNEC uncertainty factors. The data for calculating the PEC and PNEC for this safety assessment are provided in the table below. For the PEC, the range from the most recent IFRA Volume of Use Survey is reviewed. The PEC is then calculated using the actual regional tonnage, not the extremes of the range. Following the RIFM Environmental Framework, 4-methyl-5-thiazoleethanol was identified as a fragrance material with no potential to present a possible risk to the aquatic environment (i.e., its screening-level PEC/PNEC < 1).

A screening-level hazard assessment using EPI Suite v4.11 ([US EPA, 2012a](#)) did not identify 4-methyl-5-thiazoleethanol as persistent or bioaccumulative based on its structure and physical-chemical properties. This screening-level hazard assessment considers the potential for a material to be persistent *and* bioaccumulative *and* toxic, or very persistent *and* very bioaccumulative as defined in the Criteria Document ([Api, 2015](#)). As noted in the Criteria Document, the screening criteria applied are the same as those used in the EU for REACH ([ECHA, 2012](#)). For persistence, if the EPI Suite model BIOWIN 3 predicts a value < 2.2 and either BIOWIN 2 or BIOWIN 6 predicts a value < 0.5, then the material is considered potentially persistent. A material would be considered potentially bioaccumulative if the EPI Suite model BCFBAF predicts a fish BCF ≥ 2000 L/kg. Ecotoxicity is determined in the above screening-level risk assessment. If additional assessment is required based on these model outputs (Step 1), a WoE-based review is then performed (Step 2). This review considers available data on the material's physical-chemical properties, environmental fate (e.g., OECD Guideline biodegradation studies or die-away studies), fish bioaccumulation, and higher-tier model outputs (e.g., US EPA's BIOWIN and BCFBAF found in EPI Suite v4.11).

11.2.2. Risk assessment

Based on the current Volume of Use (2015), 4-methyl-5-thiazoleethanol does not present a risk to the aquatic compartment in the screening-level assessment.

11.2.2.1. Key studies

11.2.2.1.1. *Biodegradation*. No data available.

11.2.2.1.2. *Ecotoxicity*. No data available.

11.2.2.2. *Other available data*. 4-Methyl-5-thiazoleethanol has been pre-registered at REACH with no additional data at this time.

11.2.3. Risk assessment refinement

Ecotoxicological data and PNEC derivation (all endpoints reported in mg/L; PNECs in $\mu\text{g/L}$).

Endpoints used to calculate PNEC are underlined

RIFM Framework	Screening-level (Tier 1)	1172	1000000	1.172

Exposure information and PEC calculation (following RIFM Framework: [Salvito et al., 2002](#)).

Exposure	Europe (EU)	North America (NA)
Log K_{ow} Used	1.1	1.1
Biodegradation Factor Used	0	0
Dilution Factor	3	3
Regional Volume of Use Tonnage Band	< 1	1–10
Risk Characterization: PEC/PNEC	< 1	< 1

Based on available data, the RQ for this material is < 1. No additional assessment is necessary.

The RIFM PNEC is 1.172 $\mu\text{g/L}$. The revised PEC/PNECs for EU and NA are not applicable. The material was cleared at the screening-level; therefore, it does not present a risk to the aquatic environment at the current reported VoU.

Literature Search and Risk Assessment Completed On: 01/31/18

12. Literature Search*

- **RIFM Database:** Target, Fragrance Structure-Activity Group materials, other references, JECFA, CIR, SIDS
- **ECHA:** <https://echa.europa.eu/>
- **NTP:** <https://ntp.niehs.nih.gov/>

- **OECD Toolbox:** <https://www.oecd.org/chemicalsafety/risk-assessment/oecd-qsar-toolbox.htm>
- **SciFinder:** <https://scifinder.cas.org/scifinder/view/scifinder/scifinderExplore.jsf>
- **PubMed:** <https://www.ncbi.nlm.nih.gov/pubmed>
- **National Library of Medicine's Toxicology Information Services:** <https://toxnet.nlm.nih.gov/>
- **IARC:** <https://monographs.iarc.fr>
- **OECD SIDS:** <https://hpvchemicals.oecd.org/ui/Default.aspx>
- **EPA ACToR:** <https://actor.epa.gov/actor/home.xhtml>
- **US EPA HPVIS:** https://ofmpub.epa.gov/opthpv/public_search_publicdetails?submission_id=24959241&ShowComments=Yes&sqlstr=null&recordcount=0&User_title=DetailQuery%20Results&EndPointRpt=Y#submission
- **Japanese NITE:** https://www.nite.go.jp/en/chem/chrip/chrip_search/systemTop
- **Japan Existing Chemical Data Base (JECDB):** http://dra4.nih.go.jp/mhlw_data/jsp/SearchPageENG.jsp
- **Google:** <https://www.google.com>
- **ChemIDplus:** <https://chem.nlm.nih.gov/chemidplus/>

Search keywords: CAS number and/or material names

*Information sources outside of RIFM's database are noted as appropriate in the safety assessment. This is not an exhaustive list. The links listed above were active as of 04/30/20.

Declaration of competing interest

The authors declare that they have no known competing financial interests or personal relationships that could have appeared to influence the work reported in this paper.

References

- Api, A.M., Belsito, D., Bruze, M., Cadby, P., Calow, P., Dagli, M.L., Dekant, W., Ellis, G., Fryer, A.D., Fukayama, M., Griem, P., Hickey, C., Kromidas, L., Lalko, J.F., Liebler, D.C., Miyachi, Y., Politano, V.T., Renskers, K., Ritacco, G., Salvito, D., Schultz, T.W., Sipes, I.G., Smith, B., Vitale, D., Wilcox, D.K., 2015. Criteria for the Research Institute for fragrance materials, Inc. (RIFM) safety evaluation process for fragrance ingredients. *Food Chem. Toxicol.* 82, S1–S19.
- Carthew, P., Clapp, C., Gutsell, S., 2009. Exposure based waiving: the application of the toxicological threshold of concern (TTC) to inhalation exposure for aerosol ingredients in consumer products. *Food Chem. Toxicol.* 47 (6), 1287–1295.
- Comiskey, D., Api, A.M., Barratt, C., Daly, E.J., Ellis, G., McNamara, C., O'Mahony, C., Robison, S.H., Safford, B., Smith, B., Tozer, S., 2015. Novel database for exposure to fragrance ingredients in cosmetics and personal care products. *Regul. Toxicol. Pharmacol.* 72 (3), 660–672.
- Comiskey, D., Api, A.M., Barrett, C., Ellis, G., McNamara, C., O'Mahony, C., Robison, S.H., Rose, J., Safford, B., Smith, B., Tozer, S., 2017. Integrating habits and practices data for soaps, cosmetics and air care products into an existing aggregate exposure model. *Regul. Toxicol. Pharmacol.* 88, 144–156.
- ECHA, 2012. Guidance on Information Requirements and Chemical Safety Assessment Chapter R.11: PBT Assessment, November 2012 v1.1. <http://echa.europa.eu/>.
- Henry, B., Foti, C., Alsante, K., 2009. Can light absorption and photostability data be used to assess the photosafety risks in patients for a new drug molecule? *J. Photochem. Photobiol. B Biol.* 96 (1), 57–62.
- IFRA (International Fragrance Association), 2015. Volume of Use Survey, February 2015.
- Kroes, R., Renwick, A.G., Feron, V., Galli, C.L., Gibney, M., Greim, H., Guy, R.H., Lhuguenot, J.C., van de Sandt, J.J.M., 2007. Application of the threshold of toxicological concern (TTC) to the safety evaluation of cosmetic ingredients. *Food Chem. Toxicol.* 45 (12), 2533–2562.
- Laufersweiler, M.C., Gadagbui, B., Baskerville-Abraham, I.M., Maier, A., Willis, A., et al., 2012. Correlation of chemical structure with reproductive and developmental toxicity as it relates to the use of the threshold of toxicological concern. *Regul. Toxicol. Pharmacol.* 62 (1), 160–182.
- RIFM (Research Institute for Fragrance Materials, Inc), 2000. 4-Methyl-5-thiazoleethanol (Sulfuroil): Magnusson and Kligman Maximisation Study in the guinea Pig. Unpublished report from Symrise. RIFM report number 53871. RIFM, Woodcliff Lake, NJ, USA.
- RIFM (Research Institute for Fragrance Materials, Inc), 2003. Repeated Insult Patch Study of 4-Methyl-5-Thiazoleethanol at 0.5% in Diethyl Phthalate (DEP). Unpublished report from Firmenich SA. RIFM report number 43008. RIFM, Woodcliff Lake, NJ, USA.
- RIFM (Research Institute for Fragrance Materials, Inc), 2013. Report on the Testing of 4-Methyl-5-Thiazoleethanol in the BlueScreen HC Assay (-/+ S9 Metabolic Activation). RIFM report number 65081. RIFM, Woodcliff Lake, NJ, USA.
- RIFM (Research Institute for Fragrance Materials, Inc), 2014. 4-Methyl-5-thiazoleethanol: Bacterial Reverse Mutation Assay. RIFM report number 66715. RIFM, Woodcliff Lake, NJ, USA.
- RIFM (Research Institute for Fragrance Materials, Inc), 2014. 4-Methyl-5-thiazoleethanol: in Vitro Mammalian Cell Micronucleus Assay in Human Peripheral Blood Lymphocytes (HPBL). RIFM report number 67287. RIFM, Woodcliff Lake, NJ, USA.
- RIFM (Research Institute for Fragrance Materials, Inc), 2017. Exposure Survey, vol. 16 May 2017.
- Roberts, D.W., Patlewicz, G., Kern, P.S., Gerberick, F., Kimber, I., Dearman, R.J., Ryan, C.A., Basketter, D.A., Aptula, A.O., 2007. Mechanistic applicability domain classification of a local lymph node assay dataset for skin sensitization. *Chem. Res. Toxicol.* 20 (7), 1019–1030.
- Safford, B., Api, A.M., Barratt, C., Comiskey, D., Daly, E.J., Ellis, G., McNamara, C., O'Mahony, C., Robison, S., Smith, B., Thomas, R., Tozer, S., 2015a. Use of an aggregate exposure model to estimate consumer exposure to fragrance ingredients in personal care and cosmetic products. *Regul. Toxicol. Pharmacol.* 72, 673–682.
- Safford, B., Api, A.M., Barratt, C., Comiskey, D., Ellis, G., McNamara, C., O'Mahony, C., Robison, S., Rose, J., Smith, B., Tozer, S., 2017. Application of the expanded Creme RIFM consumer exposure model to fragrance ingredients in cosmetic, personal care and air care products. *Regul. Toxicol. Pharmacol.* 86, 148–156.
- Safford, R.J., Api, A.M., Roberts, D.W., Lalko, J.F., 2015b. Extension of the dermal sensitization threshold (DST) approach to incorporate chemicals classified as reactive. *Regul. Toxicol. Pharmacol.* 72 (3), 694–701.
- Salvito, D.T., Senna, R.J., Federle, T.W., 2002. A Framework for prioritizing fragrance materials for aquatic risk assessment. *Environ. Toxicol. Chem.* 21 (6), 1301–1308.
- US EPA, 2012a. Estimation Programs Interface Suite for Microsoft Windows, v4.0–v4.11. United States Environmental Protection Agency, Washington, DC, USA.
- US EPA, 2012b. The ECOSAR (ECOLOGical Structure Activity Relationship) Class Program for Microsoft Windows, v1.11. United States Environmental Protection Agency, Washington, DC, USA.